



Instructions
Gebrauchsanleitung
Instrucciones
Istruzioni

FLEXI **TESTER**
FTS101

Chlorine HR
(0.0 - 5.0 mg/l)



WATER TESTING
MADE IN GERMANY

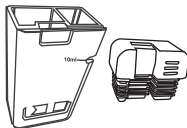
Reagents
Reagenzien
Réactifs
Reactivos
Reagenti



FTS101

TbsRD1
DPD 1 RAPID (free chlorine)

Optional
TbsRD3
50 x DPD 3 RAPID
not included in basic kit



WATER TESTING
MADE IN GERMANY

(GB) CAUTION!

Reagents for water analysis only. Do not swallow. Keep away from children. Store in a cool and dry place. Clean tester properly before testing. Do not touch the tablets with your fingers. Protect from frost. Protect the parameter stick from moisture.

(F) Attention!

Les pastilles sont exclusivement destinées aux analyses chimiques. Ne pas avaler. Tenir hors de portée des enfants. Conserver dans un endroit frais et sec. Bien rincer le testeur avant chaque utilisation. Ne touchez pas les comprimés avec vos doigts. Protéger du gel. Protéger le bâton de graduation de couleur, de l'humidité.

(E) ¡Atención!

Pastillas para el análisis de aguas, solamente para análisis químicos. No para tomar. No debe llegar a las manos de niños. Conservarse en lugar fresco y seco. Limpiar el aparato antes de usar. No toque las tabletas con los dedos. Proteger de las heladas. Proteja el parameterstick de la humedad

(I) Attenzione!

Reagenti unicamente per analisi acqua. Non ingerire. Tenere fuori dalla portata dei bambini. Mantenerne in luogo asciutto e fresco. Dopo l'utilizzo pulire ed asciugare accuratamente il tester. Non toccare la pastiglia con la dita. Proteggere dal gelo. Proteggi il parametro stick dall'umidità.

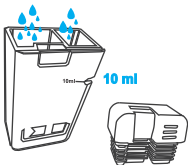
(DE) Achtung!

Reagenzien nur für chemische Analysen! Nicht einnehmen! Darf nicht in die Hände von Kindern gelangen! Kühl und trocken lagern! Vor Frost schützen. Den Parameterstick vor Feuchtigkeit schützen.



1

Fill with 10ml of water to be tested



2

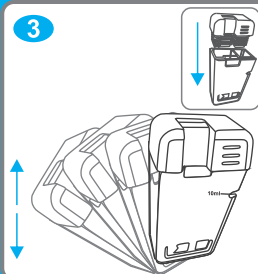


Free ChL. = 1 x DPD 1

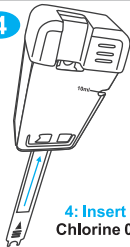
Total ChL. = 1 x DPD 1 + 1 x DPD 3
plus 2 Min.

Combined ChL. = Total ChL. - Free ChL.

3

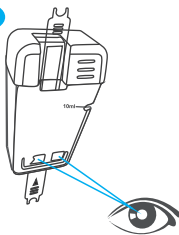


4



4: Insert FTS101 stick
Chlorine 0.00 - 5.00 mg/l

5



!!! Important !!!

Very high chlorine levels
will bleach out the DPD reagent
and lead to colorless solution!

DPD RAPID tablets
leave a white residue
on the bottom of the tester.
This is normal and does not
interfere with the measurement

